

STANTON & PARTNERS

AVIATION

2009

Gulfstream G450

SN4155 | A6-FLH



STANTON & PARTNERS
AVIATION

New York
+1 212 901 5363

Dubai
+971 800 0311 0070

London
+44 203 858 9863

Hong Kong
+852 3018 3019

Johannesburg
+27 10 100 3120

Showroom: Gate Village, Building 10,
9th Floor, DIFC, Dubai, U.A.E.
US Headquarters: 1900 Glades Rd,
4th Floor, Boca Raton, Florida 33431

HIGHLIGHTS

OUTSTANDING OWNERSHIP PEDIGREE

14 PASSENGER CONFIGURATION WITH FORWARD GALLEY

ENGINE MID-LIFE COMPLETE IN 2019

ADS-B OUT DO-260B COMPLIANT

CABIN REFURBISHMENT IN 2019

CPDLC | FANS 1/A, WAAS/LPV

AIRFRAME

Entry Into Service	2009
Total Time Since New	6,657
Total Landings Since New	2,287
Tracking	MYCMP

APU

Description	HONEYWELL GTCP36-150
Total Time Since New	4979.5
Program	Honeywell MSP
Serial Number	P-271
Cycles	5513

ENGINES

LEFT

Description	TAY 611-8C
Total Hours Since New	6,657 Hours
Total Cycles Since New	2,287
Serial Number	85315

RIGHT

Description	TAY 611-8C
Total Hours Since New	6,657
Total Cycles Since New	2,287
Serial Number	85314

Specifications and/or descriptions are provided as introductory information only and do not constitute representations or warranties. Verification of specifications remain the sole responsibility of purchaser. Photographs and images may have been modified to remove logos, registration marks, or other identifying information to protect the privacy of the Aircraft's current owner. The Aircraft is subject to prior sale, lease, and/or removal from the market without prior notice.

COCKPIT & AVIONICS

Honeywell Primus Epic PlaneView™
 Honeywell VGS Visual Guidance System (1)
 Honeywell DU-1310 Flat Panel Display Units (4)
 Honeywell GP-500 Flight Guidance System (1)
 Honeywell MAU-913 Modular Avionics Units (3)
 Honeywell MC-850 Multifunction Control Display Units (3)
 Honeywell AZ-200 Air Data Modules (3)
 Honeywell WU-880 Weather Radar (1)
 Honeywell RT-300 Radio Altimeters (2)
 Honeywell LASEREF V Micro Inertial Reference Units (3)
 Honeywell AV-900 Audio Panels (3)
 Honeywell CVR Cockpit Voice Recorder (1)
 TCAS 2000 7.1 Modified via ASC 077
 L3 GH-3100 Standby Attitude / Airspeed / Altitude Indicator (1)
 Honeywell MCS 7000 SATCOM (1)
 Mason Cursor Control Devices (2)
 Honeywell WC-884 Weather Radar Controllers (2)
 Honeywell MRC-855A Modular Radio Cabinets (2)

ADDITIONAL EQUIPMENT

Enhanced Navigation including CPDLC / ADS-B Out / FANS 1A
 Airshow 4000 Inflight System
 Satcom Direct Router and Cabin Services
 Securaplane with 3 external cameras
 PlaneView™ MOS software upgrade
 220V/50 Hz and 115V/60 Hz outlets throughout Cabin, Galley and Lavatory
 Enhanced Soundproofing
 20-inch LCD monitor in forward cabin bulkhead
 17-inch LCD monitor above credenza
 17-inch LCD monitor aft cabin bulkhead
 Six 7-inch LCD personal (seat) monitors)
 Two multi region DVD players
 Wireless LAN System

Specifications and/or descriptions are provided as introductory information only and do not constitute representations or warranties. Verification of specifications remain the sole responsibility of purchaser. Photographs and images may have been modified to remove logos, registration marks, or other identifying information to protect the privacy of the Aircraft's current owner. The Aircraft is subject to prior sale, lease, and/or removal from the market without prior notice.

2009

Gulfstream G450

SN4155 | A6-FLH

CABIN DESCRIPTION

Executive Seating Capacity	Fourteen (14)
Cabin Birthing Capacity	Six (6)
Galley Location	Forward Galley
Galley Equipment	High-temp oven, microwave, coffee maker, and chiller
Lavatory Locations	Forward crew lavatory and aft passenger lavatory
Interior Age Since New/Refurb	New Paint (2016)
Connectivity	AirCell Iridium Satellite Telephone System
In-Flight Entertainment	Airshow 4000

Cabin Zones	Three (3)
Forward Cabin	Forward Cabin - Four (4) Place Executive Club
Mid Cabin	Four (4) Place Conference Club opposite a Credenza
Aft Cabin	Divan Certified for Four (4) and Two (2) Club Seats
Crew Rest	N/A
Jump Seat	Yes
Interior Finishes - Wood Veneer	Medium
Interior Finishes - Leather	Full cream leather



Specifications and/or descriptions are provided as introductory information only and do not constitute representations or warranties. Verification of specifications remain the sole responsibility of purchaser. Photographs and images may have been modified to remove logos, registration marks, or other identifying information to protect the privacy of the Aircraft's current owner. The Aircraft is subject to prior sale, lease, and/or removal from the market without prior notice.

STANTON & PARTNERS
AVIATION

Boca Raton
+1 561 287 9806

Dubai
+ 971 800 0311 0070

London
+ 44 203 858 9863

Geneva
+ 41 22 55 101 00

Johannesburg
+ 27 10 100 3120

Hong Kong
+ 852 3018 3019

Showroom: Gate Village, Building 10,
9th Floor, DIFC, Dubai, U.A.E.

US Headquarters - 1900 Glades Rd.
4th Floor, Boca Raton, Florida 33431

2009
Gulfstream G450

SN4155 | A6-FLH

EXTERIOR

Base Paint Color	Light Blue
Stripe Color	Gold and Brown
Last Painted Date	December 2016



Specifications and/or descriptions are provided as introductory information only and do not constitute representations or warranties. Verification of specifications remain the sole responsibility of purchaser. Photographs and images may have been modified to remove logos, registration marks, or other identifying information to protect the privacy of the Aircraft's current owner. The Aircraft is subject to prior sale, lease, and/or removal from the market without prior notice.

STANTON & PARTNERS
A V I A T I O N

Boca Raton
+1 561 287 9806

Dubai
+ 971 800 0311 0070

London
+ 44 203 858 9863

Geneva
+ 41 22 55 101 00

Johannesburg
+ 27 10 100 3120

Hong Kong
+ 852 3018 3019

Showroom: Gate Village, Building 10,
9th Floor, DIFC, Dubai, U.A.E.

US Headquarters - 1900 Glades Rd.
4th Floor, Boca Raton, Florida 33431

2009

Gulfstream G450

SN4155 | A6-FLH



Specifications and/or descriptions are provided as introductory information only and do not constitute representations or warranties. Verification of specifications remain the sole responsibility of purchaser. Photographs and images may have been modified to remove logos, registration marks, or other identifying information to protect the privacy of the Aircraft's current owner. The Aircraft is subject to prior sale, lease, and/or removal from the market without prior notice.

STANTON & PARTNERS
A V I A T I O N

Boca Raton
+1 561 287 9806

Dubai
+971 800 0311 0070

London
+44 203 858 9863

Geneva
+41 22 55 101 00

Johannesburg
+27 10 100 3120

Hong Kong
+852 3018 3019

Showroom: Gate Village, Building 10,
9th Floor, DIFC, Dubai, U.A.E.
US Headquarters - 1900 Glades Rd.
4th Floor, Boca Raton, Florida 33431

2009

Gulfstream G450

SN4155 | A6-FLH



Specifications and/or descriptions are provided as introductory information only and do not constitute representations or warranties. Verification of specifications remain the sole responsibility of purchaser. Photographs and images may have been modified to remove logos, registration marks, or other identifying information to protect the privacy of the Aircraft's current owner. The Aircraft is subject to prior sale, lease, and/or removal from the market without prior notice.

STANTON & PARTNERS
AVIATION

Boca Raton
+1 561 287 9806

Dubai
+ 971 800 0311 0070

London
+ 44 203 858 9863

Geneva
+ 41 22 55 101 00

Johannesburg
+ 27 10 100 3120

Hong Kong
+ 852 3018 3019

Showroom: Gate Village, Building 10,
9th Floor, DIFC, Dubai, U.A.E.
US Headquarters - 1900 Glades Rd.
4th Floor, Boca Raton, Florida 33431

2009

Gulfstream G450

SN4155 | A6-FLH



Specifications and/or descriptions are provided as introductory information only and do not constitute representations or warranties. Verification of specifications remain the sole responsibility of purchaser. Photographs and images may have been modified to remove logos, registration marks, or other identifying information to protect the privacy of the Aircraft's current owner. The Aircraft is subject to prior sale, lease, and/or removal from the market without prior notice.

STANTON & PARTNERS
AVIATION

Boca Raton
+1 561 287 9806

Dubai
+ 971 800 0311 0070

London
+ 44 203 858 9863

Geneva
+ 41 22 55 101 00

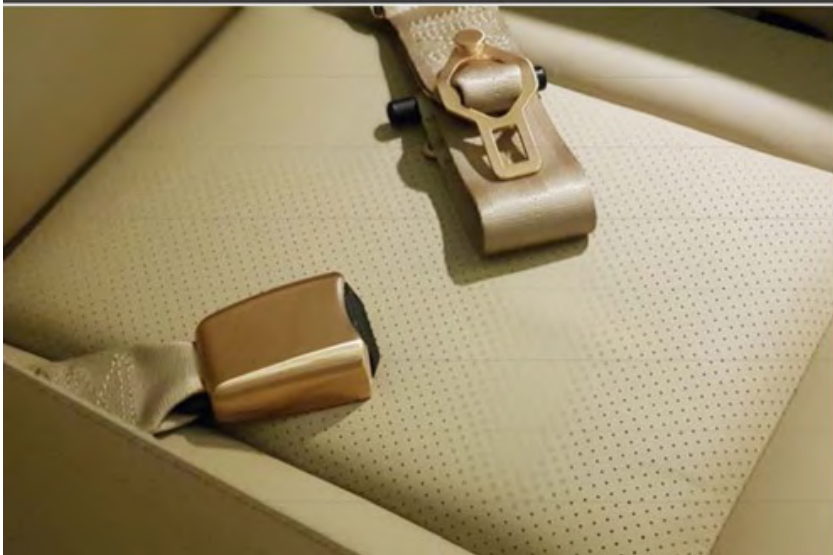
Johannesburg
+ 27 10 100 3120

Hong Kong
+ 852 3018 3019

Showroom: Gate Village, Building 10,
9th Floor, DIFC, Dubai, U.A.E.
US Headquarters - 1900 Glades Rd.
4th Floor, Boca Raton, Florida 33431

2009
Gulfstream G450

SN4155 | A6-FLH



Specifications and/or descriptions are provided as introductory information only and do not constitute representations or warranties. Verification of specifications remain the sole responsibility of purchaser. Photographs and images may have been modified to remove logos, registration marks, or other identifying information to protect the privacy of the Aircraft's current owner. The Aircraft is subject to prior sale, lease, and/or removal from the market without prior notice.

STANTON & PARTNERS
AVIATION

Boca Raton
+1 561 287 9806

Dubai
+971 800 0311 0070

London
+44 203 858 9863

Geneva
+41 22 55 101 00

Johannesburg
+27 10 100 3120

Hong Kong
+852 3018 3019

Showroom: Gate Village, Building 10,
9th Floor, DIFC, Dubai, U.A.E.
US Headquarters - 1900 Glades Rd.
4th Floor, Boca Raton, Florida 33431

Boca Raton
+1 561 287 9806

Dubai
+971 800 0311 0070

Hong Kong
+852 3018 3019

London
+44 203 858 9863

Johannesburg
+27 10 100 3120

Geneva
+41 22 55 101 00